



SLAN[®]-96P

Real-time PCR system

- ✓ **User-friendly design**
- ✓ **Innovative technology**

PERFORMANCE



Innovative dual 48/48 reaction blocks, improved efficiency and flexibility



Patented precise temperature control technology: well-to-well uniformity with an accuracy of $\pm 0.1^{\circ}\text{C}$



Advanced optical system, reliable, sensitive and calibration free



Much faster, accurate results return in less than 50 minutes



Professional multiplex detection channels, true 6 plex real-time PCR



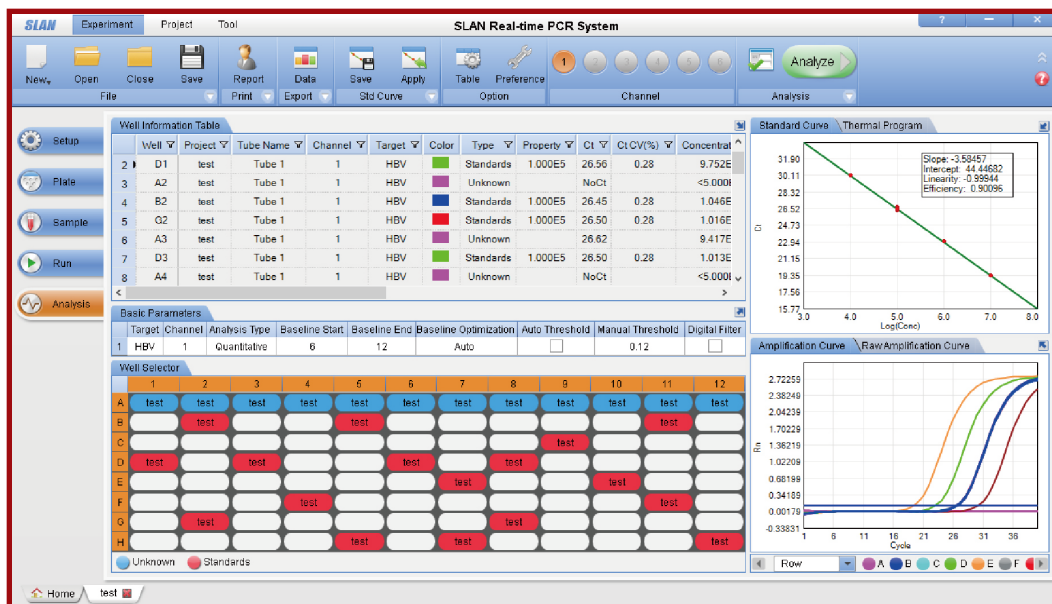
Ideal approach to your HRM study, accurate, sensitive, no need for complicated temperature shift calibration



Outstanding performance, minimal experimental errors



Powerful yet easy-to-use multitasking software, excellent tools for high-quality data analysis



SLAN-96P Multi-tasking Software Interface (analysis screen)



SPECIFICATIONS

Product model	SLAN-96P
Sample capacity	96 wells (dual 48/48 reaction module)
Sample size	15~50 μ l
Consumable	0.2mL PCR tubes, 8-tube strips, 48-well plates
Parallel running mode	Dual reaction blocks/running 2 tests independently
Temperature range	4~99°C
Max ramp rate	4.0°C/sec
Temperature accuracy	\pm 0.1°C
Temperature uniformity	\pm 0.1°C
Thermal cycling system	Peltier-based system
Temperature control mode	Tube control/block control
Light Source	LED (maintenance-free)
Detector	High sensitivity photoelectric sensor
Sensitivity	1 copy
Linearity range	10^0 ~ 10^{10}
Resolution	Can differentiate between 1000 copies and 2000 copies
Excitation	CH1 470nm CH2 530nm CH3 580nm CH4 630nm CH5/CH6 custom-made
Emission	CH1 510nm CH2 565nm CH3 620nm CH4 665nm CH5/CH6 custom-made
Dyes and probes	CH1 FAM™ /SYBRGreen® CH2 VIC® /HEX/JOE™ /TET CH3 ROX/TexasRed® CH4 CY5™
Hot-lid	30°C~108°C (default 105°C, adjustable) electronic automatic hot-lid
Power supply	230VAC, 50Hz
Power consumption	850VA
Dimensions	380mm x 520mm x 250mm (W x D x H)
Weight	18Kg
External interface	RS232, USB



ADDR. : No. 680, Lusong Road, Yuelu District, Changsha, Hunan Province, 410205, P.R.China

TEL. : +86-731-88883176-6116

FAX : +86-731-89736985

MAIL: info@sansure.com.cn / support@sansure.com.cn

WEB: eng.sansure.com.cn